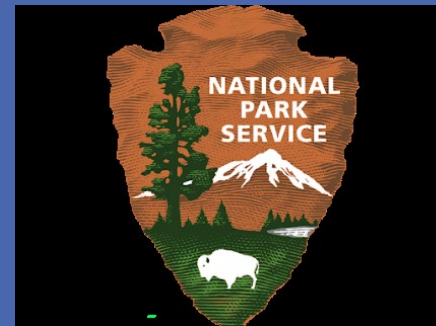


2022 LINCOLN HISTORIC PROPERTY SURVEY

City of Tacoma Historic Preservation Program



Lincoln Historic Property Survey

Overview

- **What** it is
- **Where** (project area)
- **How** is the collected information used
- **When** is it (project timeline)
- More info / how to get involved



1961 aerial view of Lincoln neighborhood, looking north. Source: Tacoma Public Library, image Richards Studio D129752-1.

Lincoln Historic Property Survey

What Is a Historic Property Survey?

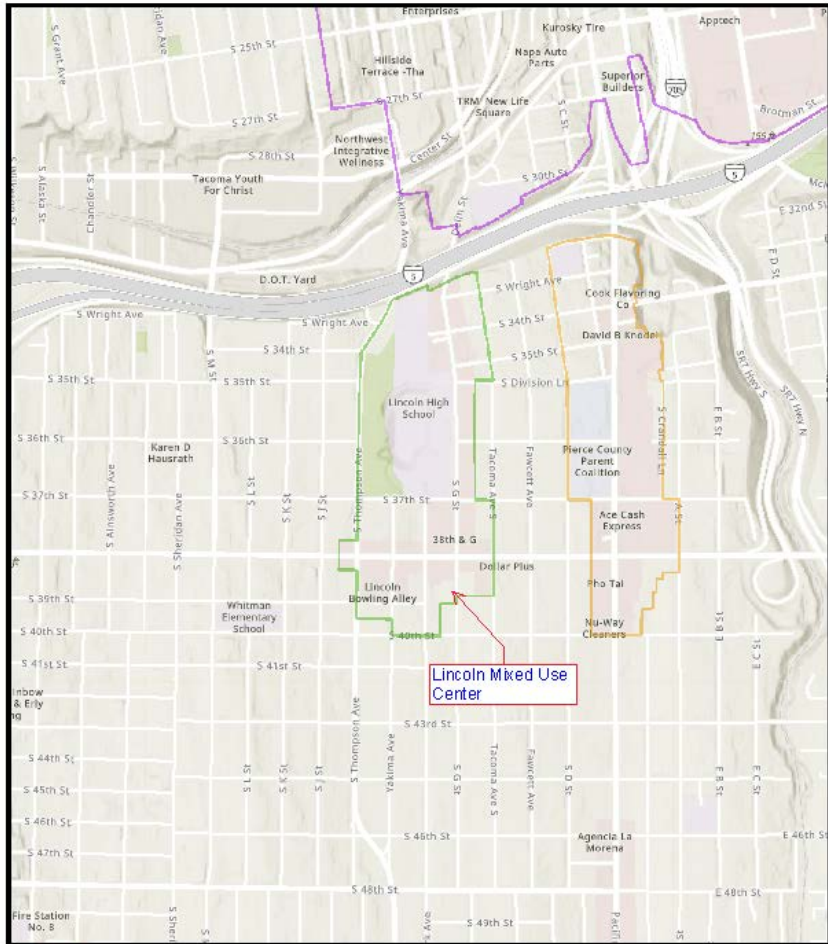
- Reconnaissance level vs. intensive level
- Field work (how, what info is gathered)
- Historic research (on what)



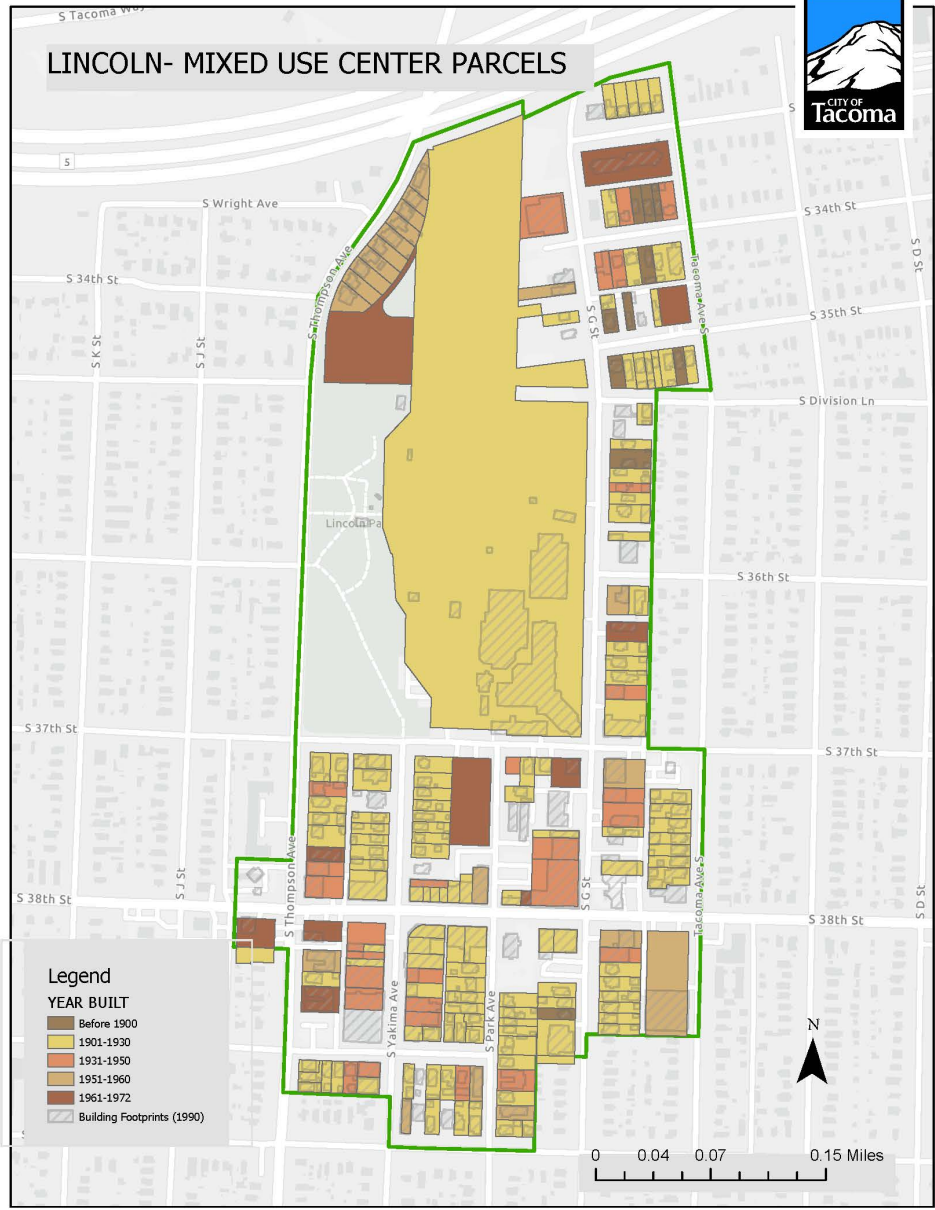
1977 view of Horsfall Building. Source: Tacoma Public Library, image BU-3355.

Lincoln Mixed-Use Center

Lincoln Mixed Use Center



- Survey Area
- Existing vs. New Forms
- Eligible properties



Lincoln Historic Property Survey

How is a Historic Property Survey Used?

- Baseline data to better understand the historic resources in the Lincoln neighborhood
- City and State project planning
- Foundation for public information, walking tours

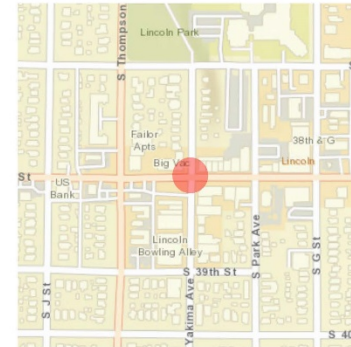


Historic Property Report

Resource Name: Horsfall Block

Property ID: 31806

Location



Address: 801-809 S 38th St, Tacoma, WA

Geographic Areas: Pierce County, T20R03E17

Information

Number of stories: N/A

Construction Dates:

Construction Type	Year	Circa
Built Date	1916	<input type="checkbox"/>

Historic Use:

Category	Subcategory
----------	-------------

Historic Context:

Category

Commerce

Architect/Engineer:

Category	Name or Company
Architect	Bresemann, Emanuel J.

Thematics:

Local Registers and Districts

Name	Date Listed	Notes
------	-------------	-------

Project History

Lincoln Historic Property Survey

Project Timeline

- **June-July:** Historic research, fieldwork
- **July-August:** Data processing, analysis
- **August-September:** Project report and public presentation of results



1952 view of 751 S. 38th Street.
Source: Tacoma Public Library,
image Richards Studio A70972-6.

Lincoln Neighborhood History Timeline

- Northern Pacific and Tacoma Land Co.
- 1890s - streetcar lines; neighborhood develops
- 1902 - Henry W Pallies and Stuart Rice "Commercial Trust Co."
- 1914 - Lincoln High School opened
- 1930s - New Deal Projects; Streetcars discontinued
- Postwar - Lincoln Bowl and New Businesses
- 1961 – Freeway
- 1970s-1980s - New Populations
- 1990s - Lincoln District Reflects Asian Cultures
- 2000s - City Partnerships and New Streetscapes



Lincoln Historic Property Survey

How to Get Involved

- Email landmarks@cityoftacoma.org
- Read more at www.cityoftacoma.org/historicpreservation

The screenshot shows the City of Tacoma website's Historic Preservation page. At the top, there is a navigation bar with the city seal and the word "WASHINGTON". Below this is a secondary navigation bar with buttons for "RESIDENTS", "SERVICES", "GOVERNMENT", "BUSINESS", and "VISITORS". The main content area features a large banner image of the Tacoma skyline with the text "Historic Preservation" overlaid. Below the banner is a breadcrumb trail: "» Government » City Departments and Offices » Planning and Development Services » Historic Preservation". A "Print Friendly" icon is also visible. The page is divided into three columns. The left column is a dark blue sidebar with a list of links: Planning and Development Services, Executive Profile, Development Services, Planning Services, Historic Preservation (bolded), About, Design Review, Projects, Financial Incentives, Heritage Project Grant Program, Historic Preservation Code Amendments, Historic Preservation Events, Landmarks Preservation Commission, Nominating a Landmark, Prairie Line Trail Interpretive Plan, Resources and Helpful Links, Standards for Historic Projects, Tacoma's Historic Districts, Tacoma Landmarks, Walking Tours, Events Calendar, and Neighborhood Planning Program. The middle column contains the main text: "Welcome to the City of Destiny" followed by a paragraph about Tacoma's history and the Historic Preservation Office's mission. Below this is a dark blue button for "Lincoln Mixed-Use Historical Property Survey" and the text "Kick-off June 9, 2022 at 5:30 PM". Two bullet points provide links to join the survey via Zoom or by phone. The right column features a "TAKE OUR CUSTOMER SURVEY" button, an "Address" section with the office location (747 Market Street, Tacoma, WA 98402), "Staff Contacts" for Reuben McKnight and Susan Johnson, and social media icons for Facebook, Twitter, and Instagram.

Lincoln Historic Property Survey

How to Research Your Building

- Tacoma Public Library's NW Room
 - Online ORCA database
 - Sanborn Maps
 - City Directories
 - Clipping files
 - Newspaper archives (microfilm)
- Tacoma Historical Society
 - www.tacomahistory.org
 - Museum, collections, publications

The screenshot shows the Tacoma Public Library website. At the top left is the logo "tacoma public library". To the right is a search bar with "Search the" followed by a dropdown menu set to "Catalog", "by" followed by a dropdown menu set to "Keyword", and a search input field with a magnifying glass icon. Below the search bar is a navigation menu with links for "Catalog", "Books & More", "Online Library", "Programs & Events", "Services", and "About". A yellow banner below the navigation menu contains the text: "New masking guidelines in effect. Masks are required in libraries for the first hour of each day." Below this is another yellow banner with the text: "All Tacoma Public Library branches will be closed on Friday, June 10th for Staff In-Service day. Plan your visit with this list of all closures." The main content area features a large banner image with a collage of historical photos and documents. Overlaid on the right side of the banner is a circular logo with a flower-like design and the text "Northwest Room at Tacoma Public Library". Below the banner is a row of five black buttons with white text: "Search Collections", "Blog", "Research Guides", "FAQ", and "Contact".

Search Collections

