



PRESENTATION(S)

Meeting on November 6, 2024

<u>Agenda Item(s)</u>	<u>Page</u>
1. One Tacoma Update – Transportation (PowerPoint slides for Discussion Item F1)	3 – 24
2. One Tacoma Update – Design and Development (PowerPoint slides for Discussion Item F2)	25 – 42



The City of Tacoma does not discriminate on the basis of disability in any of its programs, activities, or services. To request this information in an alternative format or to request a reasonable accommodation, please contact the Planning and Development Services Department at (253) 905-4146 (voice) or 711 (TTY) before 5:00 p.m., on the Monday preceding the meeting.

¿Necesitas información en español? Cần thông tin bằng tiếng Việt? 한국어로 정보가 필요하십니까? ត្រូវការព័ត៌មានជាភាសាខ្មែរ?
Нужна информация на русском? Потрібна інформація українською мовою? Contact TacomaFIRST 311 at (253) 591-5000.

Transportation Master Plan Update

Planning Commission
November 2024

AGENDA

- I. Structure of new document
- II. Engagement findings
- III. Process to update plan
- IV. Draft vision, goals, policies
- V. Key changes for elements
- VI. Work underway
- VII. Discussion



DISCUSSION

5

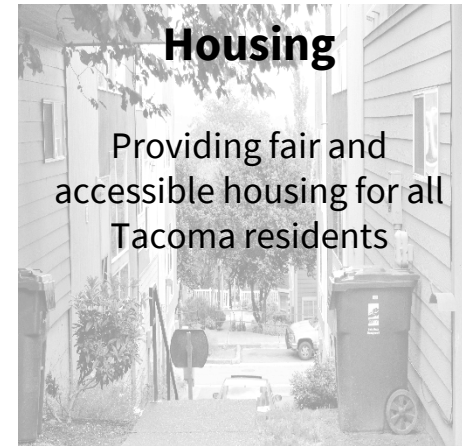


End of Presentation Discussion

- Do the updated vision, goals, and policies align with Tacoma's long-term transportation and land use needs? Are there any overarching themes or priorities that you believe should be emphasized or reconsidered?
- As the Transportation Commission continues its work to update the TMP, including review of modal and functional elements and project prioritization criteria, what overarching considerations do you feel should guide their work to best support safe, equitable, and sustainable mobility across the city?

Comprehensive Plan and the TMP

Policy Elements or “Chapters”



VISION FOR THE FINAL DOCUMENT

2.1 | DENVER DEPARTMENT OF TRANSPORTATION AND INFRASTRUCTURE

DOTI MISSION

DOTI is a modern agency focused on increasing mobility and safety while reducing congestion and fighting climate change.

DOTI FUNCTIONS

DOTI is the public agency responsible for planning, designing, building, operating, regulating, and maintaining the City's infrastructure. The agency is organized around two core functions – utilities and mobility. Utilities delivers the City's water and waste functions and green infrastructure and services. Mobility delivers transportation infrastructure, services, and initiatives for all travelers, which includes pedestrians, bicyclists, transit riders, commercial vehicles, and drivers.

Together, DOTI is responsible for most things within the public right-of-way – or all the public space between private property lines. DOTI connects and leverages the City's transportation, water, waste, and environmental systems to build a better Denver.

Denver Moves Everyone focuses on the mobility functions of the agency by providing the overall vision and framework for how transportation infrastructure is **planned** and **operated**.

PLANNING AND DELIVERING THE TRANSPORTATION SYSTEM



PLAN

Engage residents and organizations to develop strategic plans for all the ways people move, including citywide, area, and corridor mobility plans. This team's core responsibilities include transportation safety, innovation, micromobility, walking, bicycling, transit, and freight.



DESIGN

Coordinate with Denver's neighborhoods to provide project development, engineering, safety, and environmental services to advance projects identified in planning efforts and through the City's 311 resident service.



IMPLEMENT

Manage the construction of capital projects including bridges, water systems, street reconstructions, sidewalks, bikeways, and transit projects.



RESOURCE

Provide resources to the Plan, Design and Build divisions to guide program development, facilitate project implementation, and evaluate success in reaching City goals.

OPERATING AND MAINTAINING THE TRANSPORTATION SYSTEM



OPERATE

Manage the operation of transportation system assets that help manage travel flow, including street markings, signs, traffic signals, and fiber optic connections.



MAINTAIN

Conduct the upkeep and improvements to paved streets and alleys, clear snow, sweep and clean streets and bikeways, and maintain curbs and gutters.



REGULATE

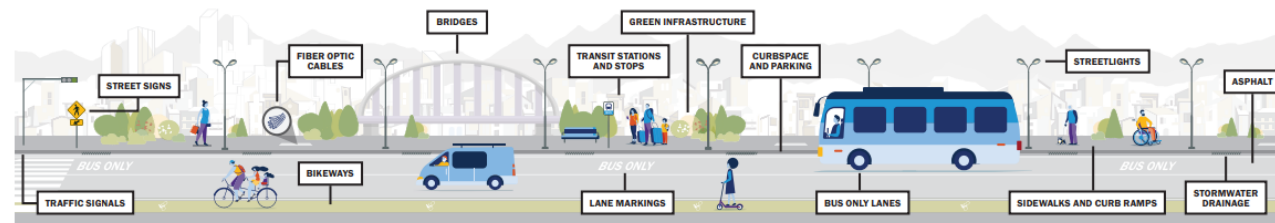
Review and permit capital projects and development to ensure transportation, water, waste, and environmental elements of the public right-of-way are coordinated and consistent with standards.



ENFORCE

Ensure compliance with standards and guidelines for parking, accessibility, sidewalks, privately built infrastructure, and other right-of-way codes.

FIGURE 2.1: Public Right-of-Way Infrastructure Elements of Denver's Transportation System



Main Document – Concise (~50 pages) and Visual

VANCOUVER TSP MODAL ELEMENTS
City of Vancouver
Page 10 of 49

Figure 6 Bicycle and Small Mobility Facility Selection

Contextual Guidance for Selecting All Ages & Abilities Bikeways

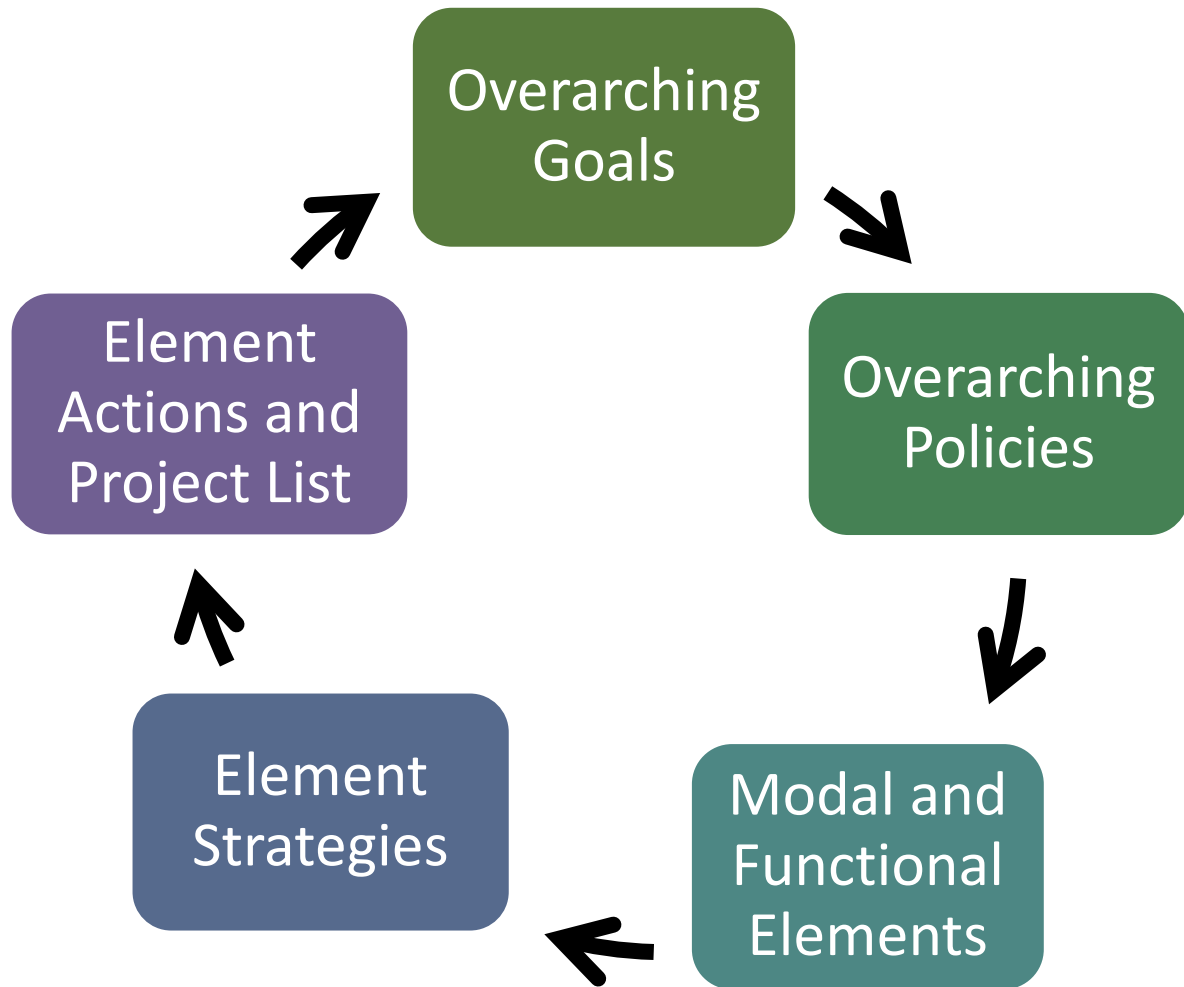
Roadway Context				All Ages & Abilities Bicycle Facility
Target Motor Vehicle Speed ¹	Target Motor Vehicle Volume (ADT)	Motor Vehicle Lanes	Key Operational Considerations	
Any		Any	Any of the following: high curbside activity, frequent buses, motor vehicle congestion, or turning conflicts ²	Protected Bicycle Lane
< 10 mph	Less relevant		Pedestrians share the roadway	Shared Street
< 20 mph	≤ 1,000 – 2,000	No centerline, or single lane one-way	< 50 motor vehicles per hour in the peak direction at peak hour	Bicycle Boulevard
	≤ 500 – 1,500			
< 25 mph	≤ 1,500 – 3,000	Single lane each direction, or single lane one-way	Low curbside activity, or low congestion pressure	Conventional or Buffered Bicycle Lane, or Protected Bicycle Lane
	≤ 3,000 – 6,000			Buffered or Protected Bicycle Lane
	Greater than 6,000	Multiple lanes per direction		Protected Bicycle Lane
Greater than 26 mph ¹	≤ 6,000	Single lane each direction	Low curbside activity, or low congestion pressure	Protected Bicycle Lane, or Reduce Speed
	Greater than 6,000	Multiple lanes per direction		Protected Bicycle Lane, or Reduce to Single Lane & Reduce Speed
		Any	Any	Protected Bicycle Lane
High-speed limited access roadways, natural corridors, or geographic edge conditions with limited conflicts	Any	Any	High pedestrian volume	Bike Path with Separate Walkway or Protected Bicycle Lane
			Low pedestrian volume	Shared-Use Path or Protected Bicycle Lane

Source: National Association of City Transportation Officials (NACTO)

Together, the network development process and facility selection were used to create the TSP's future bicycling and small mobility network (Figure 7). Figure 8, Figure 9, Figure 10, Figure 11, and Figure 12 show the bicycling and small mobility network divided into five zones. This acts as both a key policy adopted in the TSP and will also lead to capital projects that implement this network.

Appendices – full detail, memo-style

CONTENTS OF THE TMP



Growth Management Act Mandates

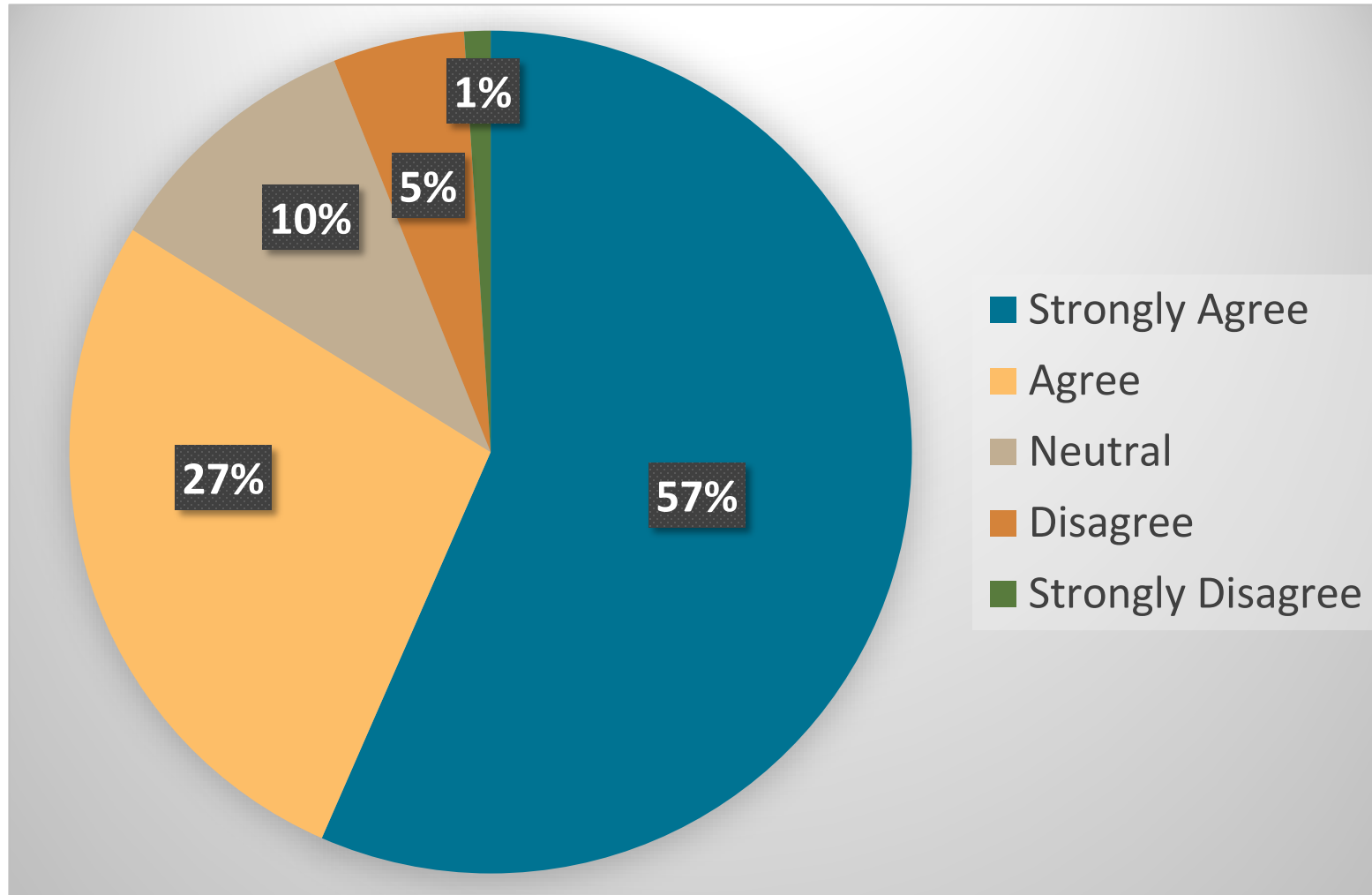
- Multimodal Level of Service Standards
- Future Modal Element Maps
- Financial Plan
- Performance Measures
- Project Prioritization
- Financially Constrained Project List
- Traffic Model Documentation

ENGAGEMENT AND FEEDBACK

- One Tacoma Visioning Workshops
- Online ideas wall
- Past engagement events
 - Vision Zero
 - Home in Tacoma
 - Participatory Budgeting
 - Safe Routes to School Action Plan Update
 - Sub-Area Planning
 - Neighborhood Planning



ENGAGEMENT AND FEEDBACK



2024 Community Survey Question 9.

“In the future, daily essentials, such as groceries, schools, parks, and healthcare should be a safe and short walk, bus, train, or bike ride away for every resident.”

WHAT HAS BEEN COMPLETED

TRANSPORTATION COMMISSION'S FOCUS



Name of document



Vision Statement



Goals



Policies



Underway: Project List Criteria (Nov. 13)

PROCESS TO UPDATE PLAN

Involved: Internal Technical Advisory Group (TAG), Relevant Commissions and Advisory Groups, Transportation Commission

Element	Involved	Transportation Commission Review
PEDESTRIAN	TAG + BPTAG + consultant (map)	November 20
BICYCLE	TAG + BPTAG	November 20
TRANSIT	TAG+ TOD Task Force + consultant	December 18 with PC
AUTO	TAG	November 20
FREIGHT	TAG + Tideflats Sub-Area Plan	December 4
PUBLIC REALM & ACTIVATION	TAG	December 4
CURB MANAGEMENT	TAG + PTAG	December 4

NEW NAME FOR DOCUMENT

TRANSPORTATION AND MOBILITY PLAN



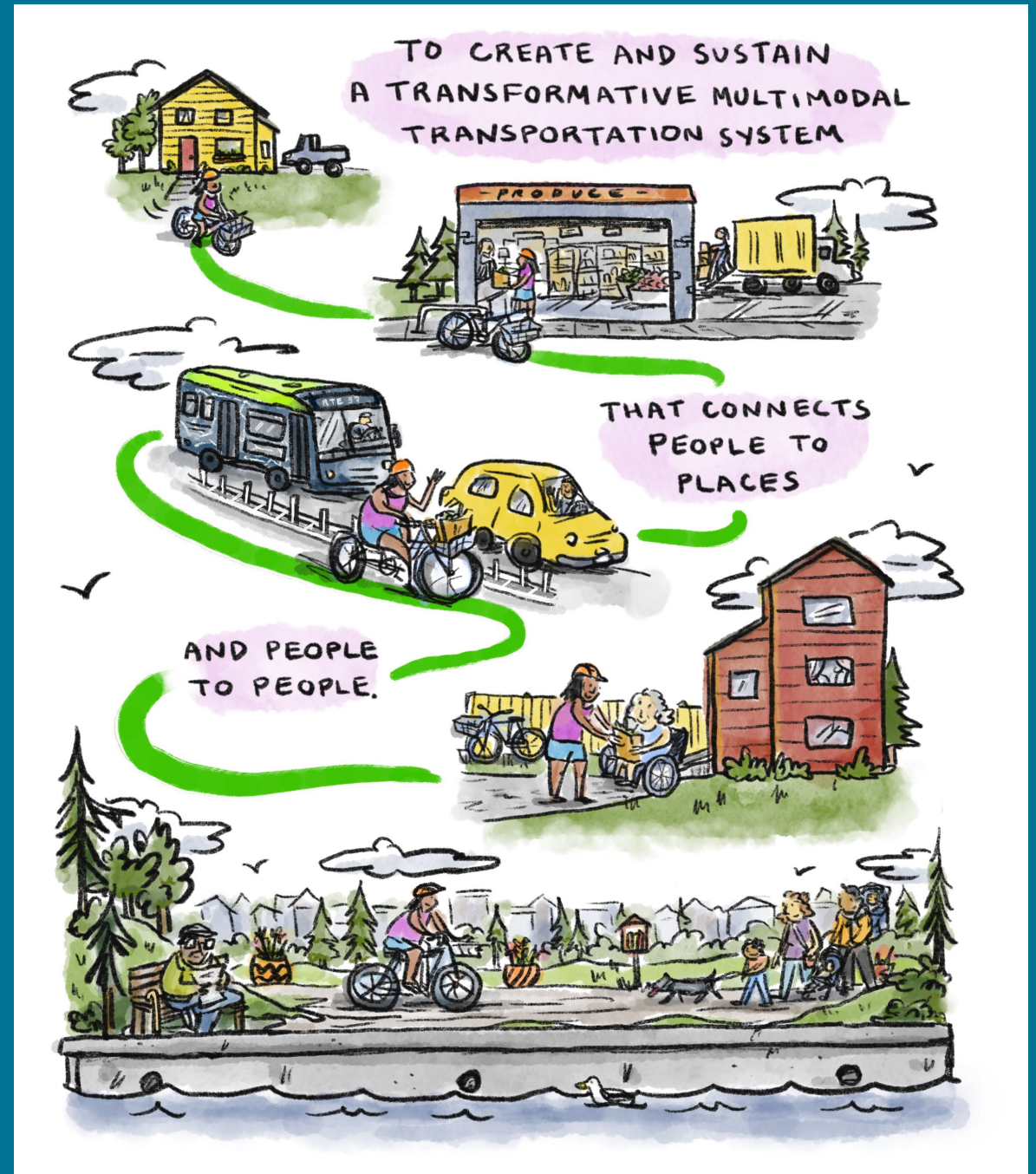
Physical aspects of travel



Ease and accessibility of moving within a community

DRAFT UPDATED TMP VISION STATEMENT

To create and sustain a
transformative multimodal
transportation system that
connects people to places and
people to people



DRAFT UPDATED TMP GOALS

Advance Equity
and Livability

Ensure a Safe and
Comfortable
Experience

Make Tacoma an
Environmentally
Sustainable and
Healthy Place to Live

Cultivate
Meaningful
Partnerships

Connect the
Tacoma
Community

Maintain and
Modernize
Transportation
Resources

Promote
Transparent
Decision-Making

Support a Thriving
Economy

FULL GOAL LANGUAGE

Advance Equity and Livability: Harm is repaired, and burdens from legacy transportation infrastructure decisions are alleviated by prioritizing investment identified through equitable engagement in communities that have experienced disproportionate impacts and disinvestment.

DRAFT UPDATED TMP POLICIES

GOAL

Advance Equity and Livability: Harm is repaired, and burdens from legacy transportation infrastructure decisions are alleviated by prioritizing investment identified through equitable engagement in communities that have experienced disproportionate impacts and disinvestment.

POLICY

Center the voices of communities of color, individuals with a lived experience of poverty, and underrepresented groups when planning, designing, and making-decisions about key transportation policies, projects, and programs.

Process to create new policies

1. Reviewed 2015

- Keep
- Remove
- Make strategy

2. Consultant draft

3. Staff work session

4. Transportation Commission work session

TMP MODAL AND FUNCTIONAL ELEMENTS

Mode or Function Element	Element Vision or Outcome
Pedestrian	Safe, accessible, and comfortable mobility for people walking and rolling on all of our city streets.
Bicycle	All ages and abilities network provides safe, connected access to our city.
Transit	Frequent, reliable mobility connecting all neighborhoods and to the region.
Freight	Reliable access to Port facilities and regional freeways, and ensure essential items reach Tacoma businesses.
Auto	Streets designed to encourage slower speeds and support emergency response and goods delivery.
Curb Management	Effective and equitable curb allocation to assure access between destinations and the transportation network.
Public Realm and Activation	Places for people to connect and community life to unfold.

The TMP Update adds elements that address **access and placed based functions of the street.**

KEY CHANGES TO ELEMENTS

PEDESTRIAN ELEMENT

- No longer tied to 20-minute walkshed
- Better align land use and transportation and prioritize pedestrian routes that connect mixed use centers, schools, frequent transit network, and parks

BIKE ELEMENT

- Moving from bike boulevards to neighborhood greenways and increasing the number of greenways

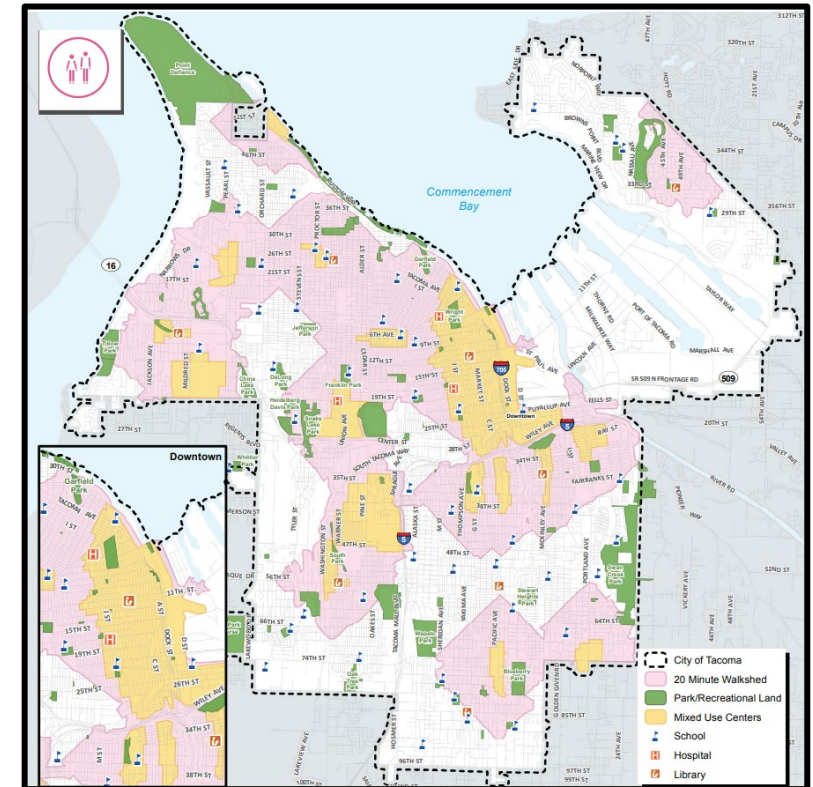


Image: 2015 Pedestrian TMP Map

KEY CHANGES TO ELEMENTS

TRANSIT ELEMENT

- Creating a Frequent Transit Network Map

FREIGHT ELEMENT

- Including reference to South Tacoma MIC and showing MIC land use on Freight Map

AUTO ELEMENT

- No auto priority streets and focused on street system (safety)
- New Tier 1 Emergency Response Route map

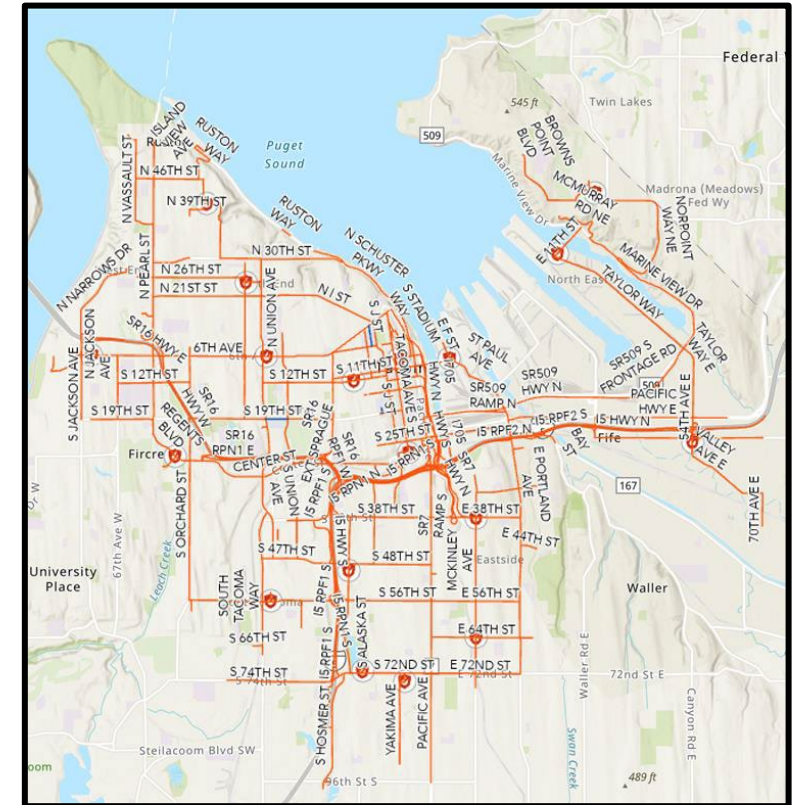
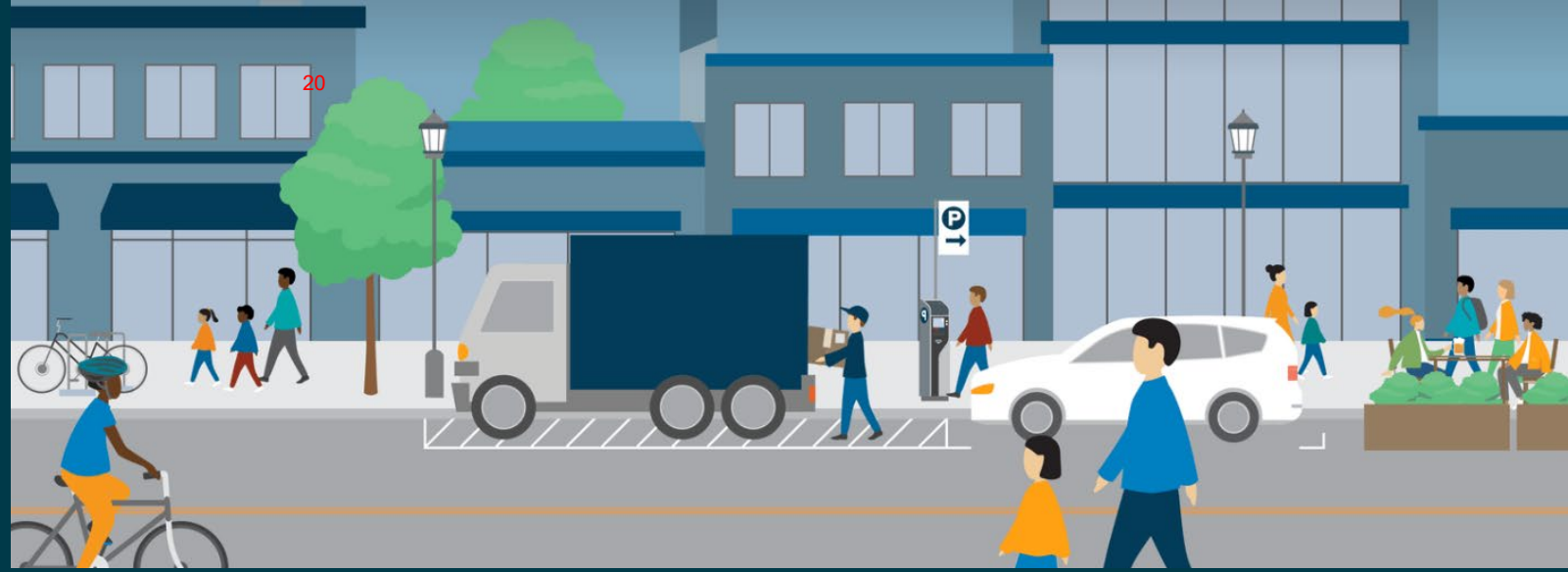


Image: 2025 TMP Tier 1 Emergency Route Map

KEY CHANGES TO ELEMENTS



NEW! FUNCTIONAL ELEMENTS

Public Realm and Activation

- Using the right-of-way for more than movement of people and goods

Curb Management

- Managing a finite and high-demand resource (curb space)

WORK UNDERWAY

Creating internal review draft: Introduction, Context, Elements

Traffic model update

Multimodal Level of Service standards

Project list prioritization criteria

Updating project list

Performance metrics

Financial: Existing and projected revenue

DISCUSSION

- Do the updated vision, goals, and policies align with Tacoma's long-term transportation and land use needs? Are there any overarching themes or priorities that you believe should be emphasized or reconsidered?
- As the Transportation Commission continues its work to update the TMP, including review of modal and functional elements and project prioritization criteria, what overarching considerations do you feel should guide their work to best support safe, equitable, and sustainable mobility across the city?

Transportation Master Plan Update

Infrastructure, Planning, and Sustainability Committee
September 2024

A young girl with a pink backpack is painting a green wall with handprints. The wall is part of a larger structure, possibly a playground or school building. The girl is wearing a blue dress and white gloves. The background shows green bushes and a building with a rainbow flag.

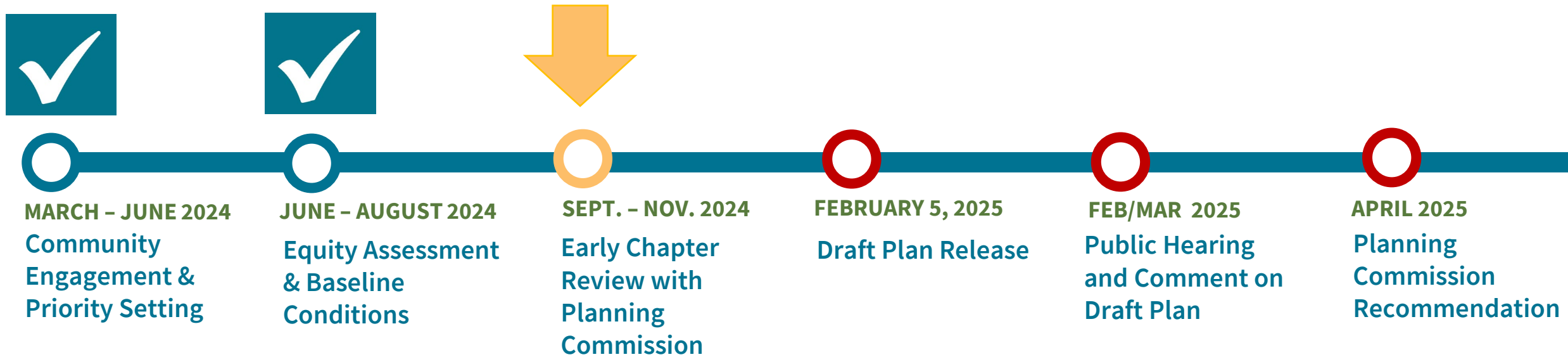
ONE TACOMA

A Comprehensive Plan for a
Vibrant, Connected and Sustainable City

Agenda

1. Comprehensive Plan Timeline
2. Schedule for Commission Presentations
3. Plan Overview
4. Design and Development Element
5. Anticipated Changes in this Update

Project Timeline



Vision

Every Tacoma Resident is a safe short walk, roll, bus, train, or bike ride away from daily essentials, such as groceries, schools, parks, and healthcare.

ONE TACOMA

VISION FOR A 15 MINUTE CITY



FOCUS AREAS

Five cross-cutting priority themes to integrate in policy writing.

EQUITY

Every resident shares in community progress.

OPPORTUNITY

Neighborhoods where residents can reach their full potential.

PUBLIC HEALTH

Support to maintain healthy minds and bodies.

SAFETY

A place where everyone feels safe to live, work, and play.

SUSTAINABILITY

Achieving climate goals and planning for future Tacomans.

Planning Commission Briefings²⁹

A series of 6 briefings from September – November will allow the project team to share key policy updates for Plan elements and hear feedback from the Commission before a draft plan is published.

1 Sept 4 – Parks and Recreation
Leads: Alyssa Torrez, Alisa O’Hanlon

2 Sept 18 – Public Facilities
Leads: Wesley Rhodes, Nick Anderson

3 Oct 2 – Urban Form, Housing
Leads: Wesley Rhodes, Stephen Atkinson, Ted Richardson

4 Oct 16 – Historic Preservation
Lead: Reuben McKnight

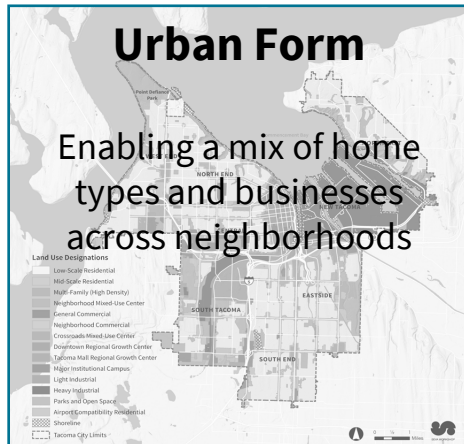
5 Nov 6 – Transportation, Design + Development
Leads: Carrie Wilhelme, Stephen Antupit, Carl Metz

6 Nov 20 – Economic Development + Environment + Watershed Health
Leads: Paul Bakker, Adam Nolan, Maryam Moeinian, Kristin Lynett, Brandy Lubliner

7 Dec 4 – Environment + Watershed Health, Engagement
Leads: Maryam Moeinian, Alyssa Torrez

What will be in the Plan?

10 Policy Elements or “Chapters”



Design + Development

Guiding the design and development of our city's neighborhoods

Housing

Providing fair and accessible housing for all Tacoma residents

Transportation

Building an accessible and affordable transportation network

Engagement + Administration

Connecting with community and running efficient and effective departments

Public Facilities + Services

Providing services and facilities such as roads, utilities, parks, education, and safety

Parks + Recreation

Creating fair access to parks and recreation services that showcase the unique cultures and natural settings in our city

Environment + Watershed Health

Protecting our watersheds, trees, open spaces, and wildlife habitats

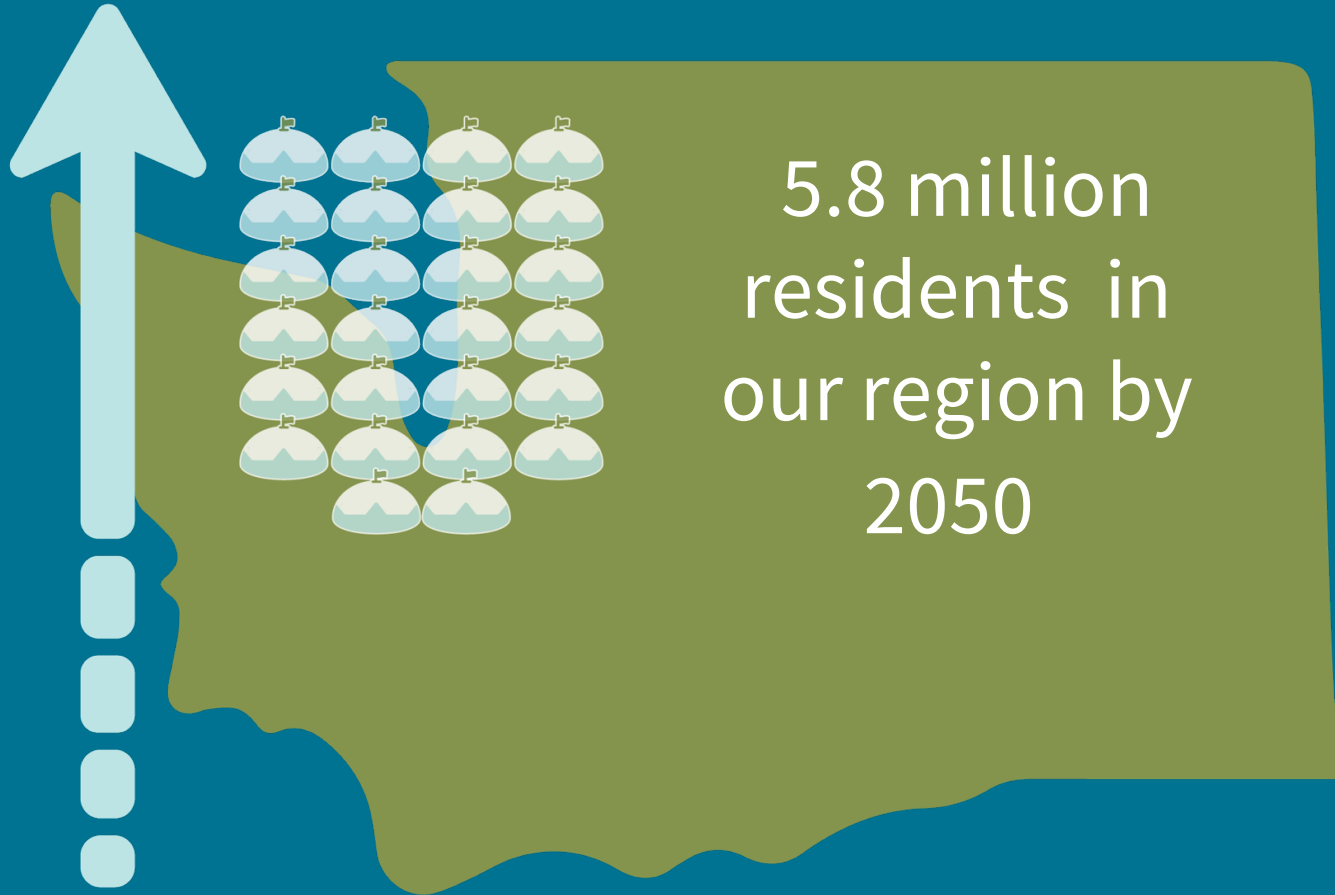
Economic Development

Boosting economic opportunities for all residents

Historic Preservation

Highlighting communities' histories and the human stories behind them

Planning Context



137,000 new residents



59,000 new homes



94,000 new jobs

Policy Audit Principles

Structure and Content:

- Strengthen the connection between goals and policies
- Remove redundant language, reduce redundancy with other elements but show key connections
- Connect everything to the Vision Statement and Focus Areas and reinforce the overall growth strategy

Language:

- Use more people-centered language that focuses on the experience that the City aims to create.
- Identify accountable parties and parties where possible
- Use a consistent term or terms for those we intend to serve with the plan. Replace “citizen” with a more inclusive term, such as “community member”
- Be more specific about equity terms, existing disparities, and priority groups.

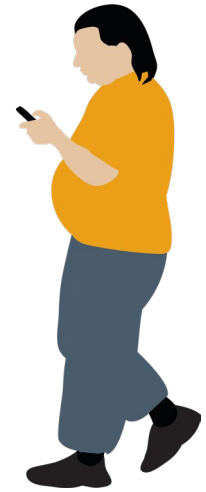


Priority Outcomes for the Design & Development Element

The project team has identified outcomes reflecting a holistic picture of community wellbeing. The Design and Development element is directly tied to these outcomes:

- 1. Climate impacts: Urban Heat Index**
- 2. Walkable Neighborhoods**
- 3. Perception of Safety**
- 4. Historic Preservation**

Goals and policies will address these topics, with an emphasis on improving outcomes in areas with the lowest scores today.



Key Updates in the Design & Development Element

- **Rename to “Neighborhood Design”**
 - **Connect to a 15-minute city through neighborhood design that reflects:**
 - Human-scale design
 - Safety and Comfort
 - Equitable access to opportunity
 - Resilience
 - Cultural identity
 - **Incorporate existing residential pattern area policies from Urban Form Element as appropriate**
 - **Align with Transportation + Mobility Plan – Public Realm and Activation**
 - **Organize goals under six urban design topics, each with policies addressing three scales**
- 

Existing Design & Development Element Overview

15 Goals with three (3) to 21 Policies each

Includes high-level topics such as enhancing human health and protection from environmental hazards

Numerous Goals related to development patterns, neighborhood design, and scenic, cultural, and historic resources

Also includes highly specific topics such as parking area design, signs, and access to healthy food

Neighborhood Planning added in late 2021



Existing Urban Form Element: Historic Residential Pattern Area Policies

Urban Form Element includes 61 Policies specific to six Historic Residential Pattern Areas

Review for potential incorporation into Neighborhood Design Element structure by:

- Scaling up to be more broadly applicable citywide
Ex) Policy UF-13.48 Enhance the village character of the neighborhoods' small commercial districts and increase opportunities for more people to live within walking distance of these neighborhood anchors.
- Speaking to context-specific conditions
Ex) Policy UF-13.18 Maintain and enhance the streetcar era pattern of street-oriented buildings.
- Identify any that might be better addressed elsewhere (i.e. other Element, neighborhood plan)
Ex) Policy UF-13.28 Encourage the conversion of electrical substations for recreational purposes if the sites are no longer needed for their intended purpose.

Neighborhood Design Element Update: Goals

Goals

Organized under six broad urban design topics

- Completeness
- Connectivity
- Built form
- Public space
- Culture, heritage, and creative expression
- Environmental health and resiliency



Neighborhood Design Element Update: Policies

Policies

Address three scales for each topic

- Neighborhood
- Site
- Public realm



Neighborhood Design Element Update: Example Goal and Policies

Goal

Tacoma's neighborhoods are sustainable, resilient, and resource efficient.

Policies

Neighborhood

Seek opportunities to minimize environmental impact at a district scale by considering the collective use of technologies, techniques, and materials across multiple development sites and projects.

Site

Encourage use of technologies, techniques, and materials in building design, construction, and removal that result in the least environmental impact over the life cycle of the structure including use of renewable resources, strategies to make efficient use of water, manage stormwater, and reduce urban heat island effects.

Public realm

Help people stay cool and safe outdoors by increasing tree canopy and expanding access to parks, green spaces, and cooling centers especially in areas identified as containing urban heat islands (such as Central and South Tacoma).



Planning Commission Briefings⁴⁰

What's Next?

1 Sept 4 – Parks and Recreation
Leads: Alyssa Torrez, Alisa O’Hanlon

2 Sept 18 – Public Facilities
Leads: Wesley Rhodes, Nick Anderson

3 Oct 2 – Urban Form, Housing
Leads: Wesley Rhodes, Stephen Atkinson, Ted Richardson

4 Oct 16 – Historic Preservation
Lead: Reuben McKnight

5 Nov 6 – Transportation, Design + Development
Leads: Carrie Wilhelme, Stephen Antupit, Carl Metz

6 Nov 20 – Economic Development + Environment + Watershed Health
Leads: Paul Bakker, Adam Nolan, Maryam Moeinian, Kristin Lynett, Brandy Lubliner

7 Dec 4 – Environment + Watershed Health, Engagement
Leads: Maryam Moeinian, Alyssa Torrez

Questions or Comments?



ONE TACOMA

A Comprehensive Plan for a
Vibrant, Connected and Sustainable City

THANK YOU!

onetacoma@cityoftacoma.org